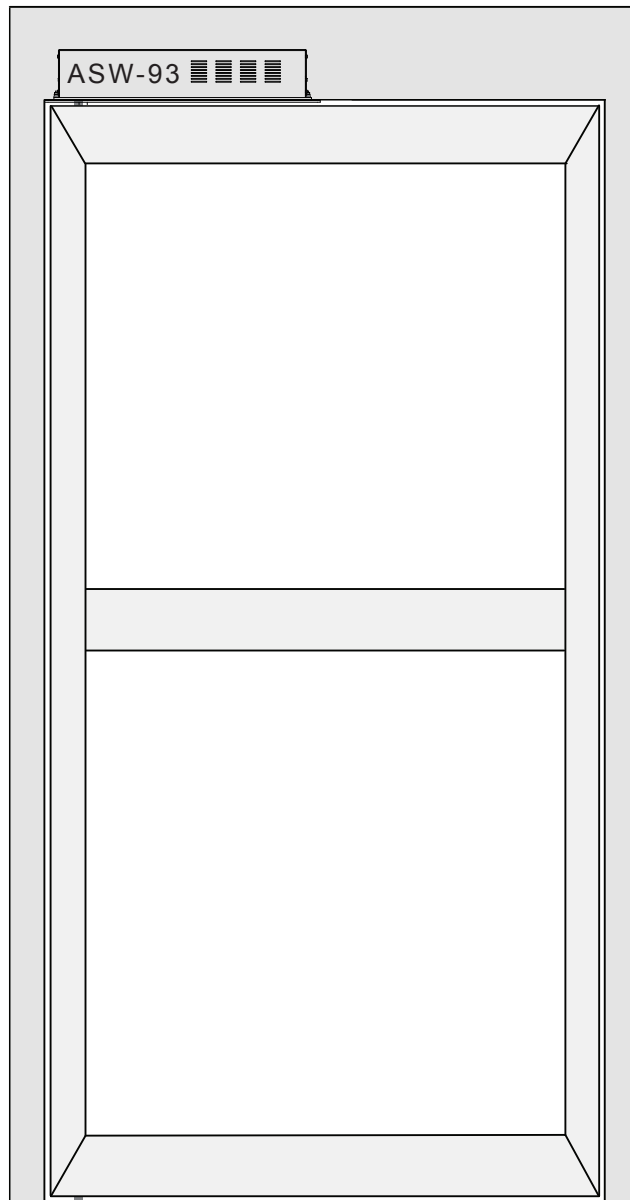


AUTO SWING DOOR

Installation guide

CONCEALED



AUTOMATIC ENTRANCE SPECIALISTS

Talbot Automatic Doors and Gates
www.talbotautodoors.com.au
Ph: 1300 560 608

1. Technical Parameters

Supply Voltage: 220V-240V 50/60Hz

Opening time: 3 ~ 7S

Max. opening angle: 105°

Hold open time: 1 ~ 30S

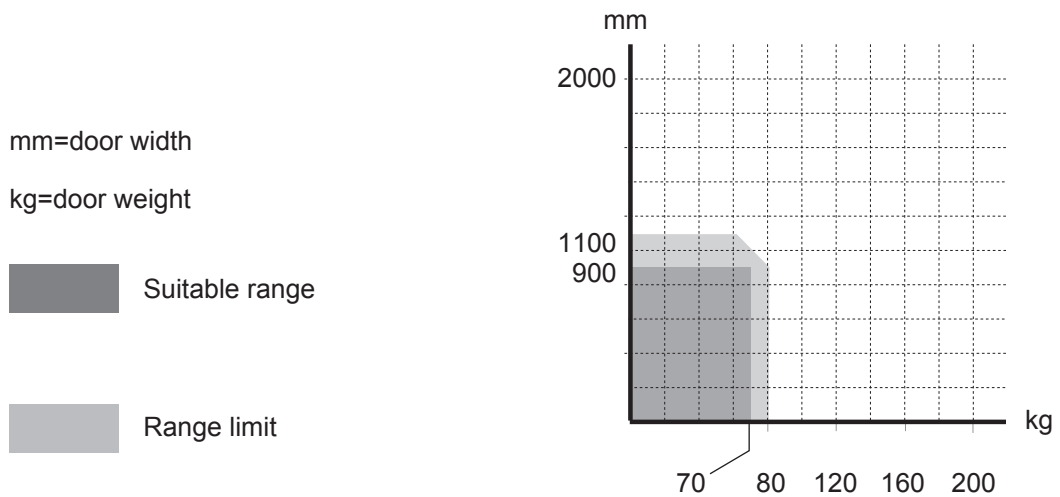
Environment temperature: -20°C ~ +50°C

Protection level: IP12D

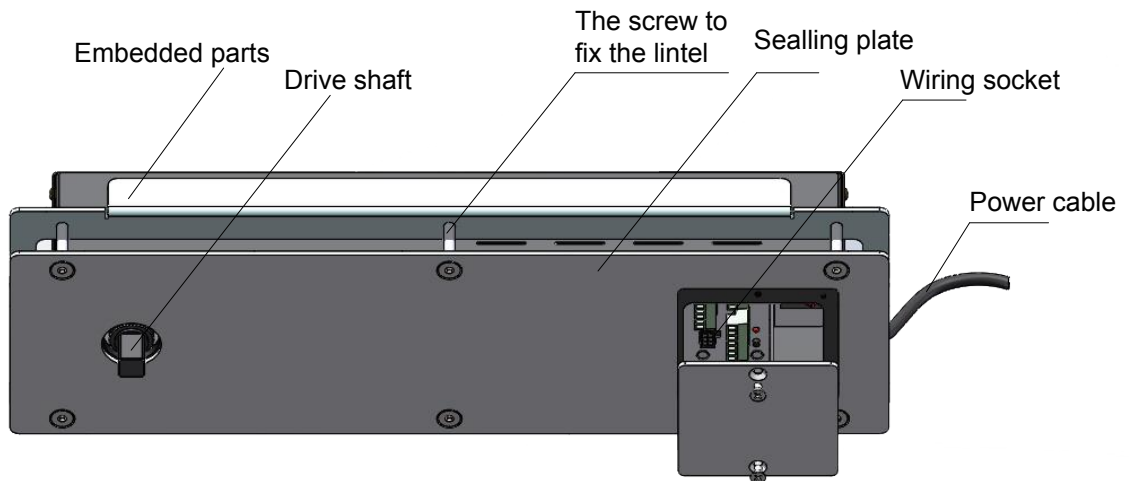
Weight (main engine): 8.5kg

Dimension: L470 x W135 x H90mm

Suitable door leaf: weight ≤ 70 kg , width ≤ 900 mm



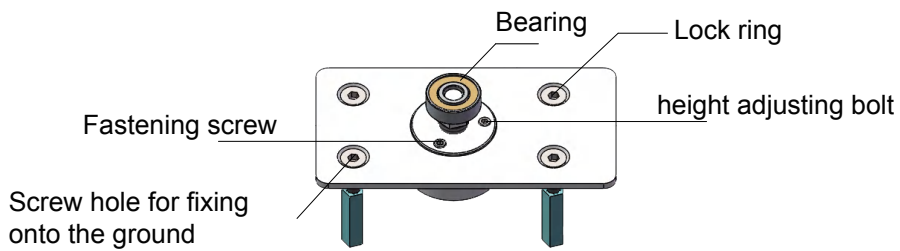
2. Introduction of main engine and components



Main Engine



Setting panel



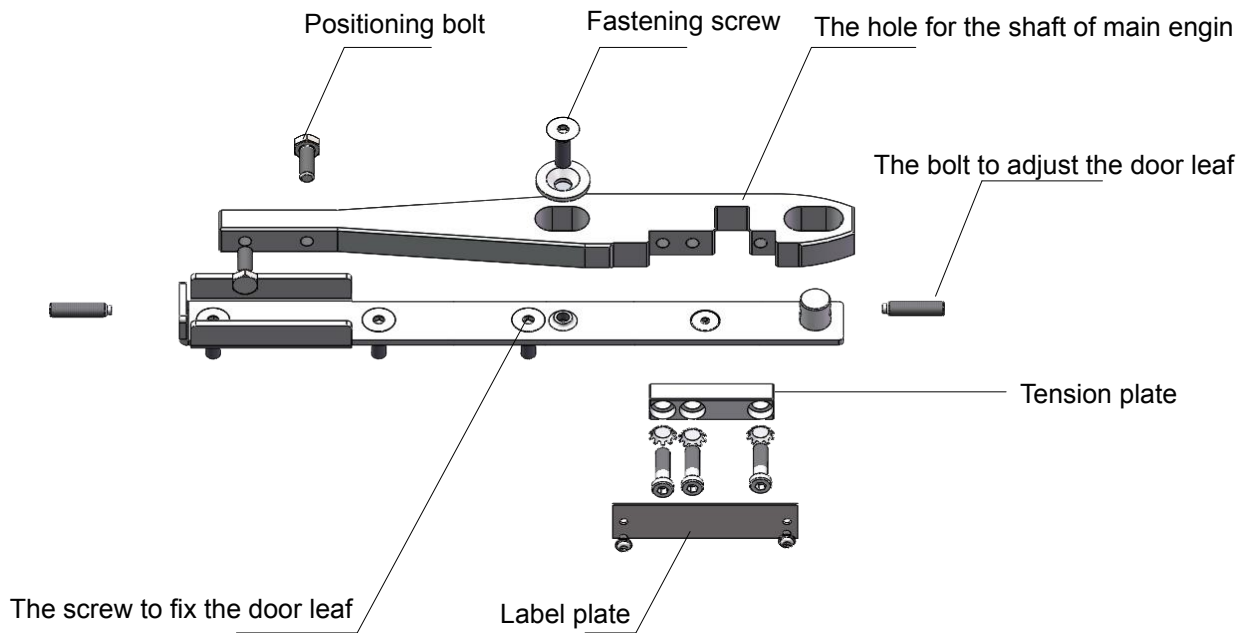
Ground bearing seat



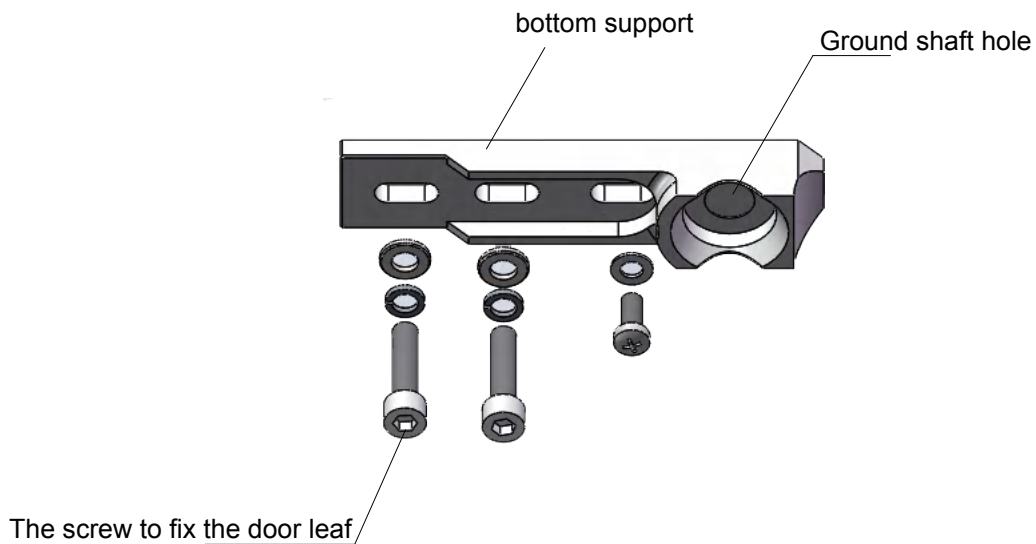
Concealed SYNC cables

3. Introduction of the door leaf accessories

3.1 Framed door accessories



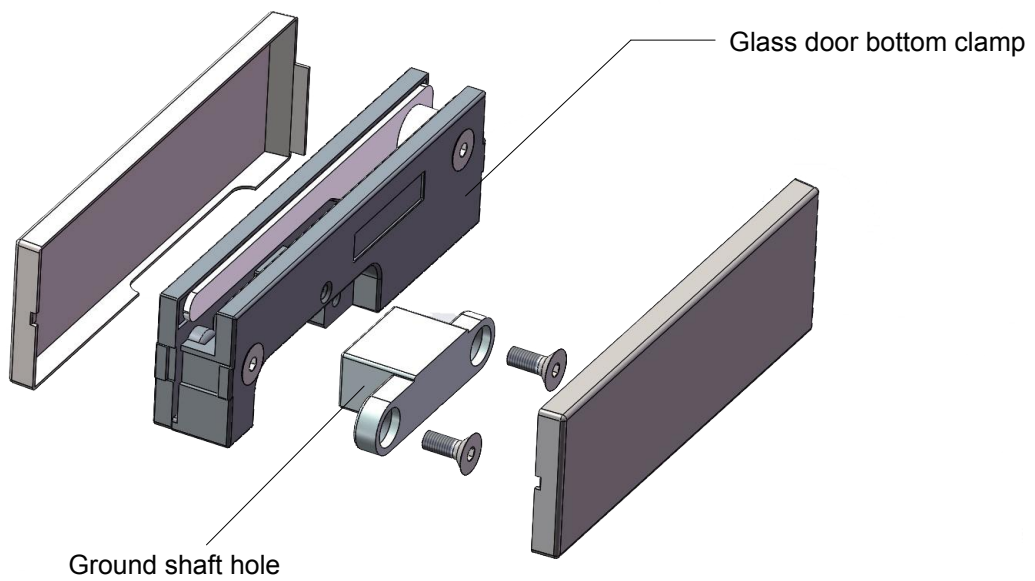
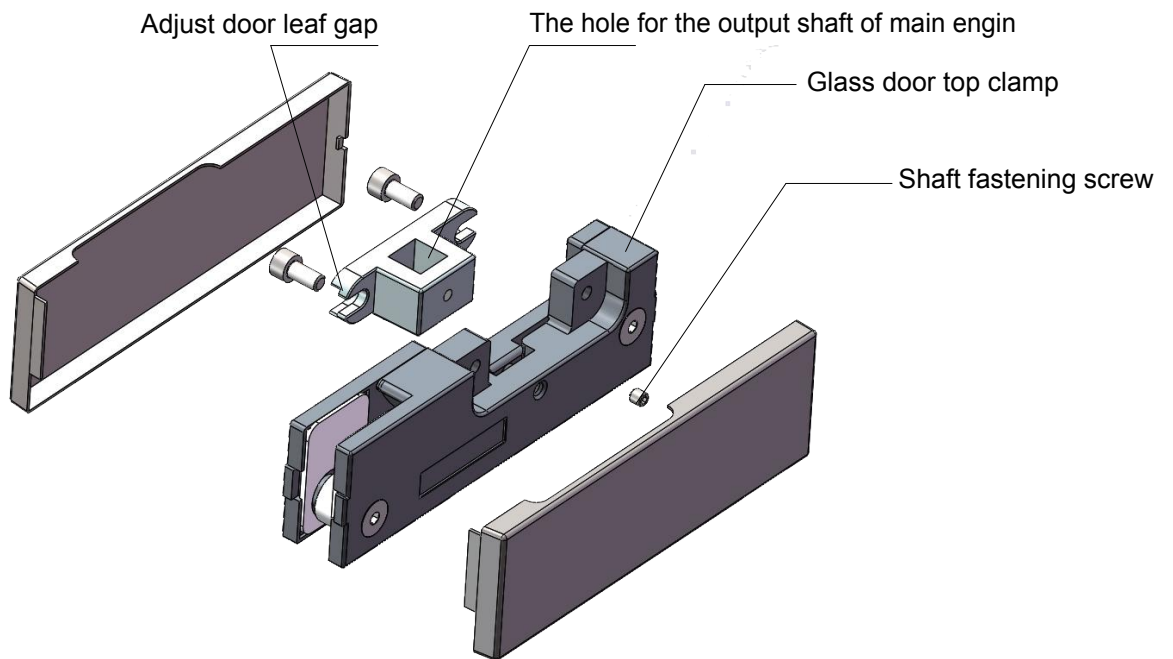
Framed door top parts



Framed door bottom parts

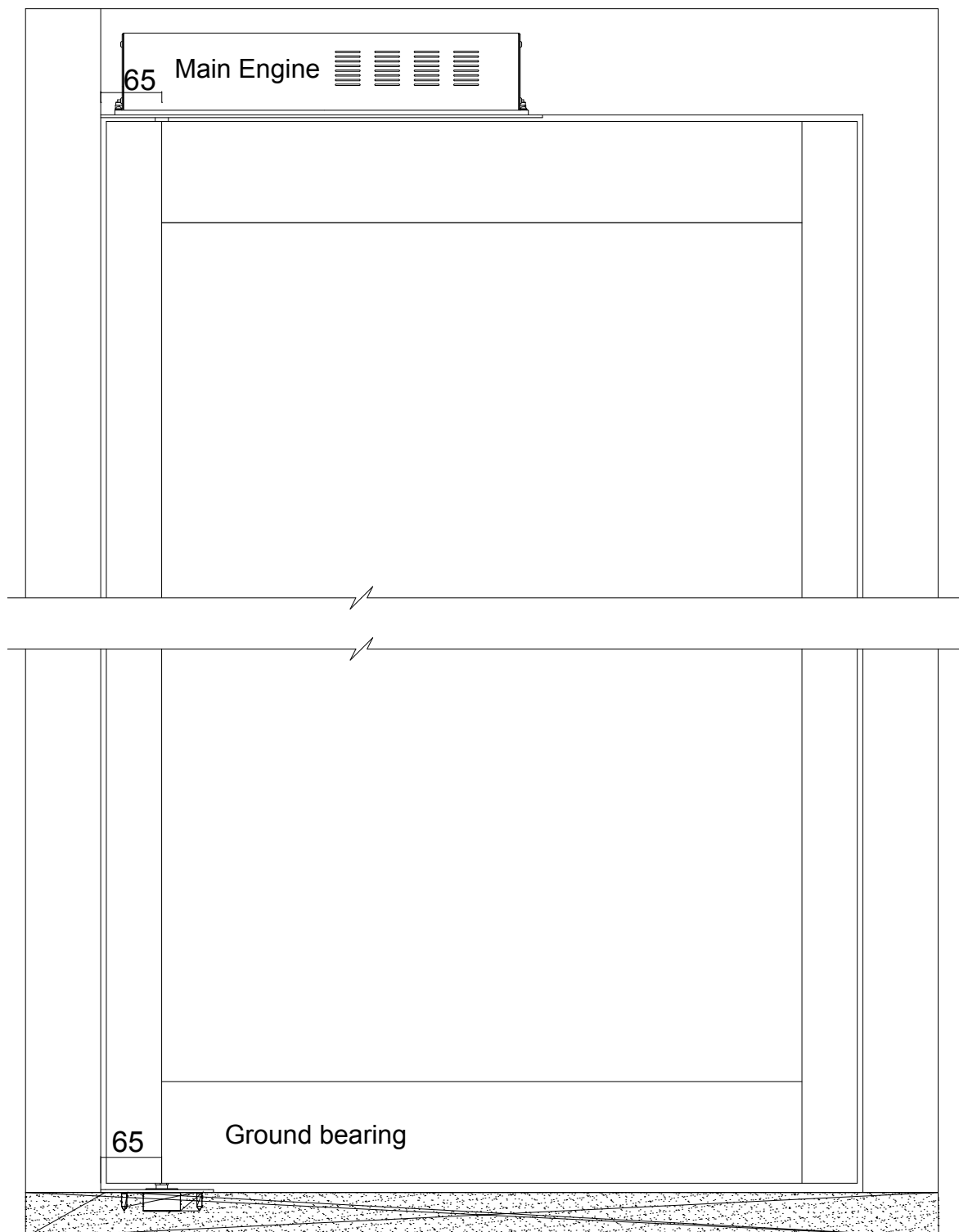
3. Introduction of the door leaf accessories

3.2 Glass door clamp accessories



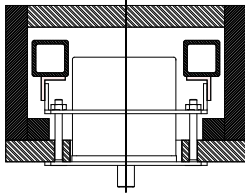
4. Mechanical installation

4.1 The installation diagram of main engine and ground bearing

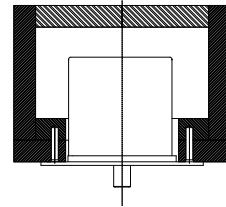


4. Mechanical installation

4.2 The installation structure diagram of main engine and ground bearing



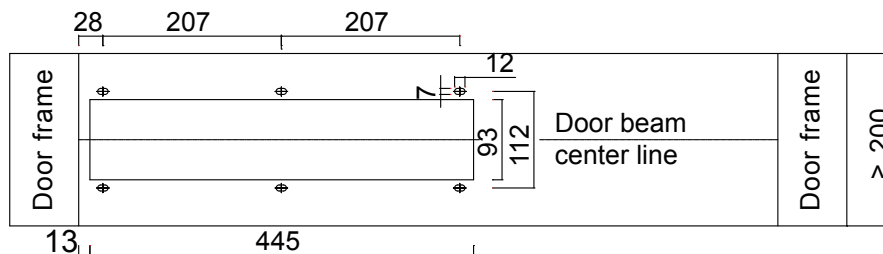
Door beam structure diagram (A)



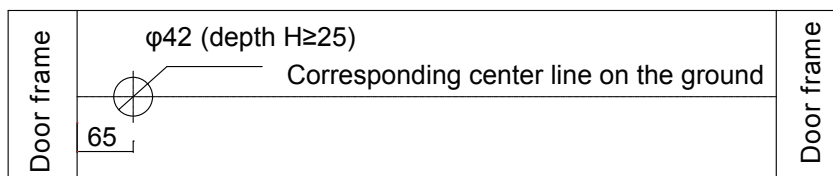
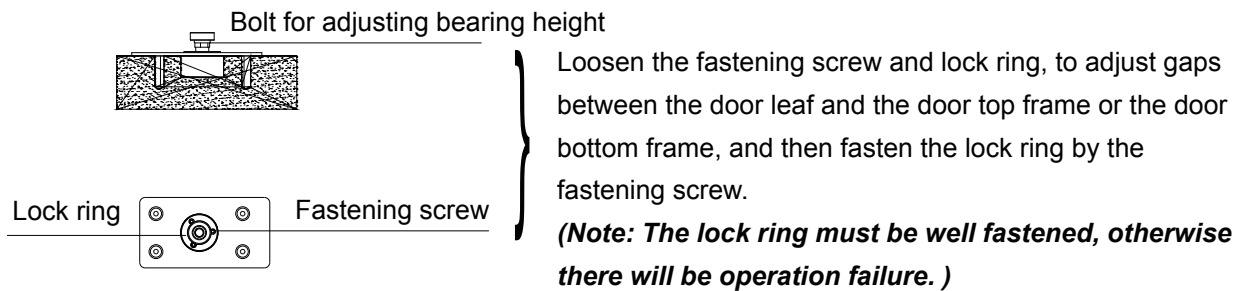
Door beam structure diagram (B)

The fixing method for main engine with embedded parts

The fixing method for main engine with wooden board



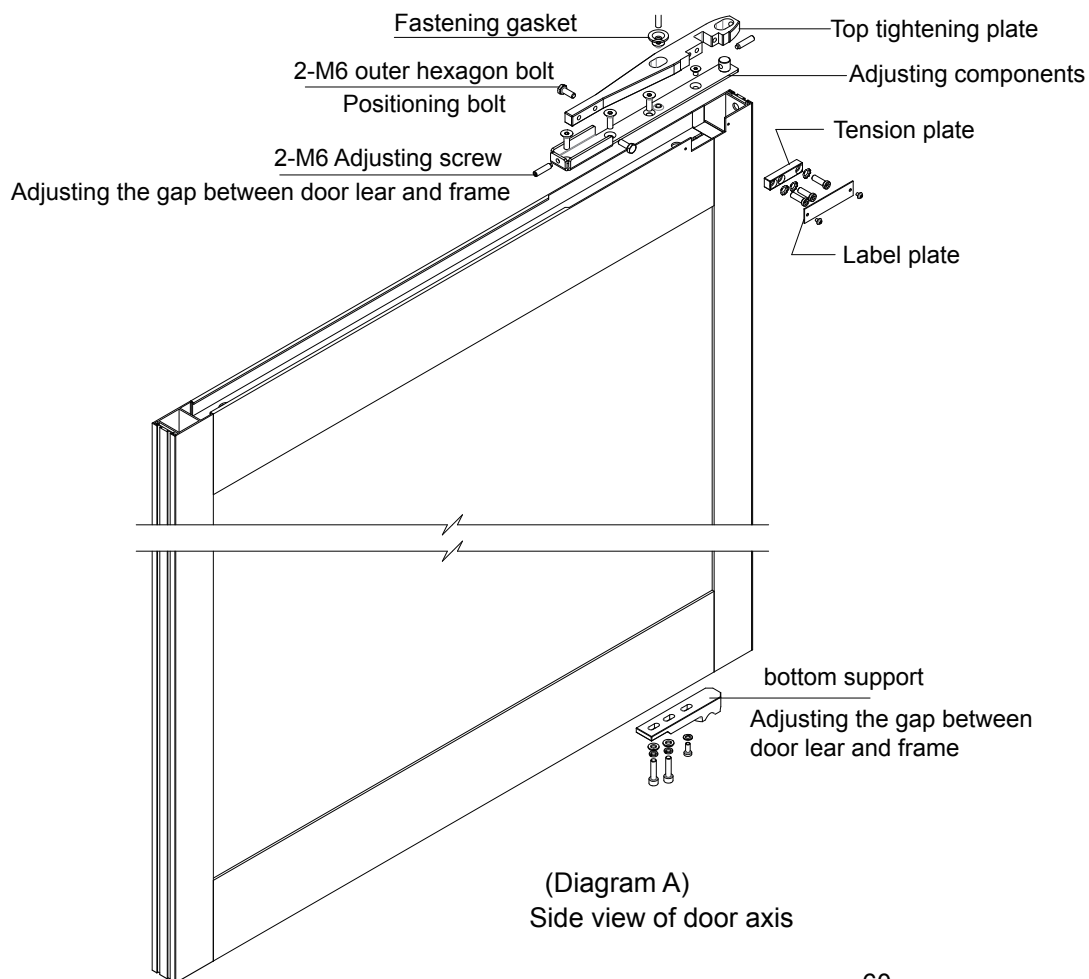
Door beam bottom hole dimension



The ground hole dimension

4. Mechanical installation

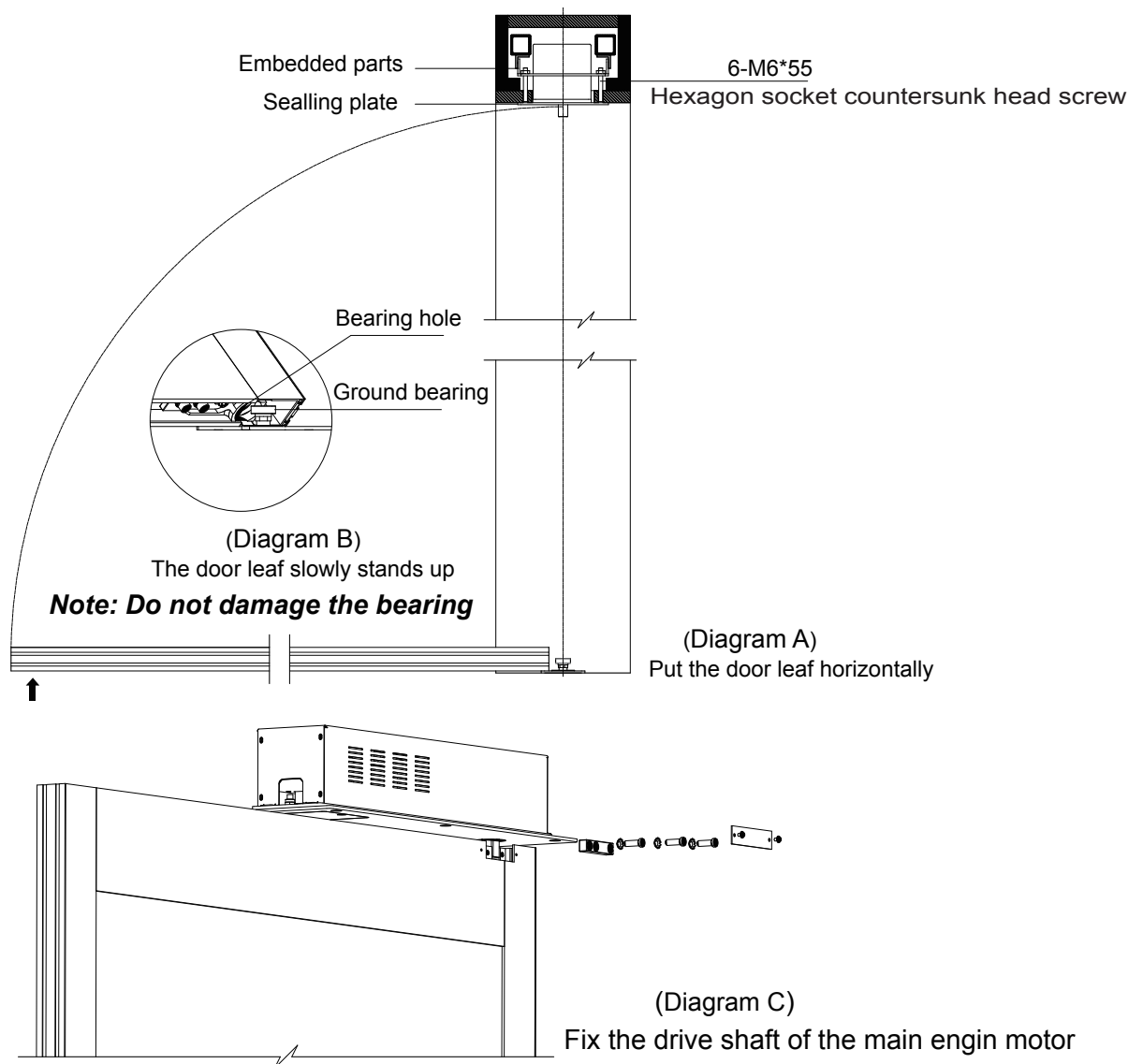
4.3.1 The installation of top and bottom accessories for framed door



1. When do the concealed installation for the framed door, the cutting surface (label plate) of door leaf is inside;
2. Fix the top parts combination on the top of the door leaf with 3pcs M6 and 1pc M5 hexagon socket countersunk head screws. Fix the top tightening plate, pre-tighten the fastening gasket;
3. Adjust the left and right gaps between the door leaf and frame with 2-M6 adjusting screw, then after adjusting the 2-M6 outer hexagon bolt to ensure that the front and back of top tightening plate are correctly positioned (diagram B), lock the fastening gasket;
4. Install the drive shaft from cutting surface and fix the tension plate by 3pcs M6 socket head bolts with external tooth washer to lock the motor shaft, then install the label plate of the door leaf (diagram A);
5. Fix the bottom support at the bottom of the door leaf as needed (diagram C) .

4. Mechanical installation

4.3.2 The diagram for overall installation of framed door



1. When install this type door, the main engine moves upward, connect and tighten the sealing plate and embedded part with 6pcs M6*55 hexagon socket countersunk head screws, so that the main engine is fixed on the beam (countersunk head self-tapping screw is needed to fix the main engine if fixed directly on the blockboard);
2. Use the level to locate the main engine motor shaft and the ground bearing center, and install and fix the ground supporting parts after alignment;
3. Place the door leaf with accessories horizontally first, align the bearing hole with the ground bearing, and slowly stand the door leaf, turn the door to the appropriate position and mount the motor shaft to fix it; Follow (diagram A), (diagram B) and (diagram C).

Note: when remove the door leaf, lift and remove the door leaf parallel to the axial direction of the bearing (lever can be used on the ground). In this process, take care that the bearing will not be damaged.

4. Mechanical installation

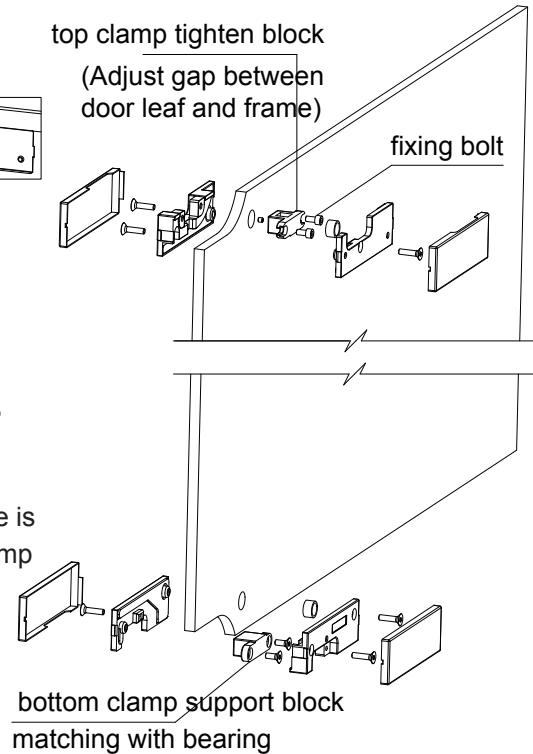
4.4 Install glass door clamp top and bottom

1. When to install with glass door, follow (diagram A) to fix the top and bottom clamps on the glass;

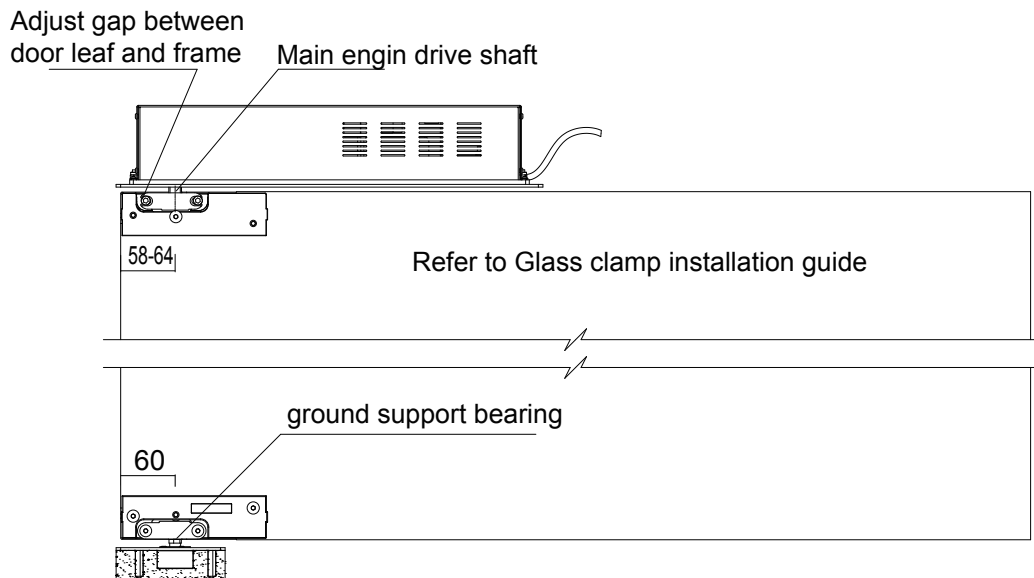
2. Make the bearing hole of the bottom clamp correspond to the bearing position of the ground support bearing, and slowly stand the glass door from the horizontal direction to complete the bottom assembly (the step installation and disassembly are same as Guide 4.3.2);

3. Loosen the fixing bolts of the top clamp tighten block, connect the main engine drive shaft with the top clamp tighten block, and initially fix it on the top glass clamp. When the gap between the door leaf and the door frame is adjusted, tighten the fixing bolts to complete the top clamp assembly on the glass.

Note: the fixing bolts must be securely fastened, otherwise it will fail in operation;

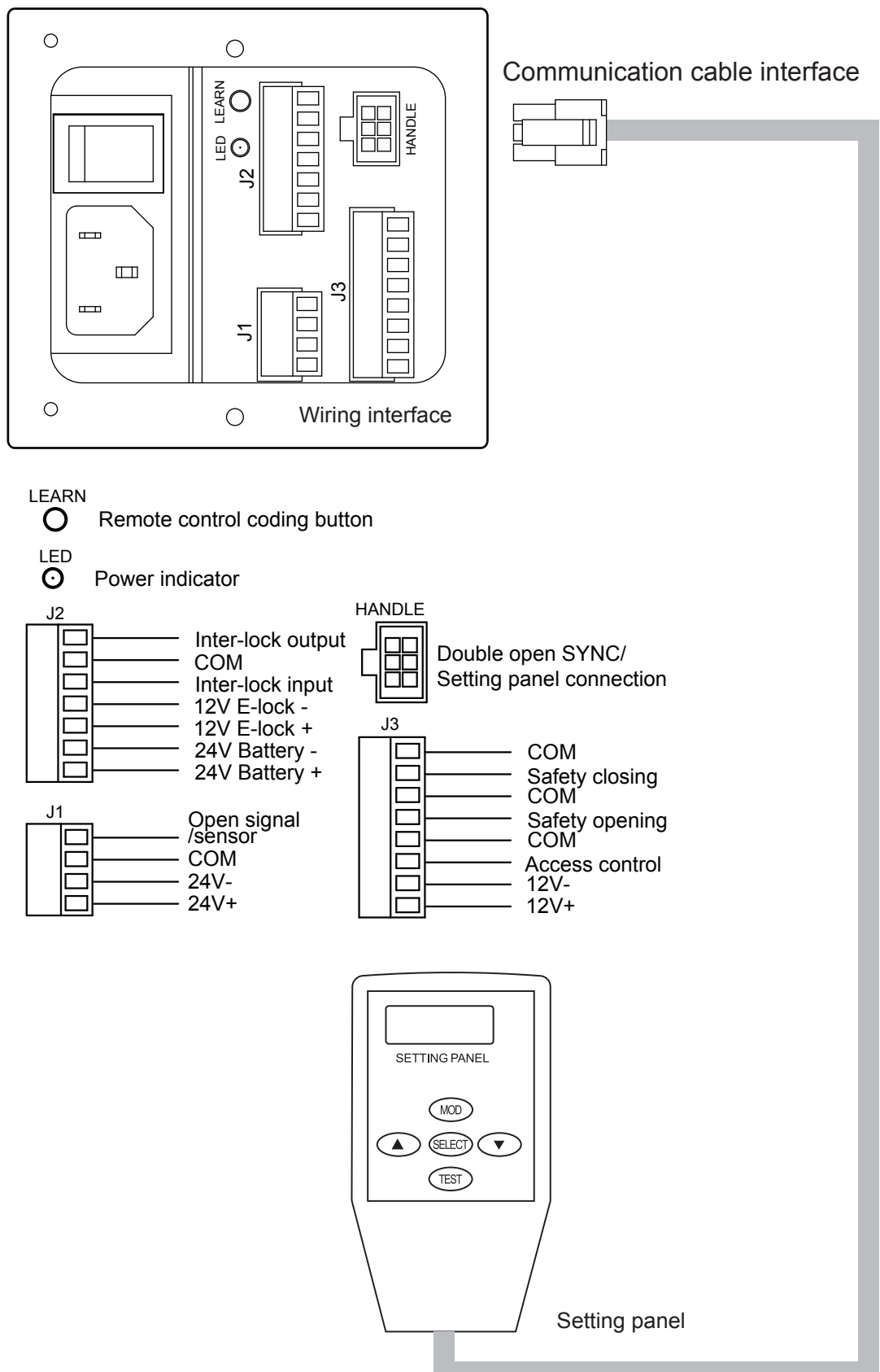


(Diagram A)
Installation of glass clamp

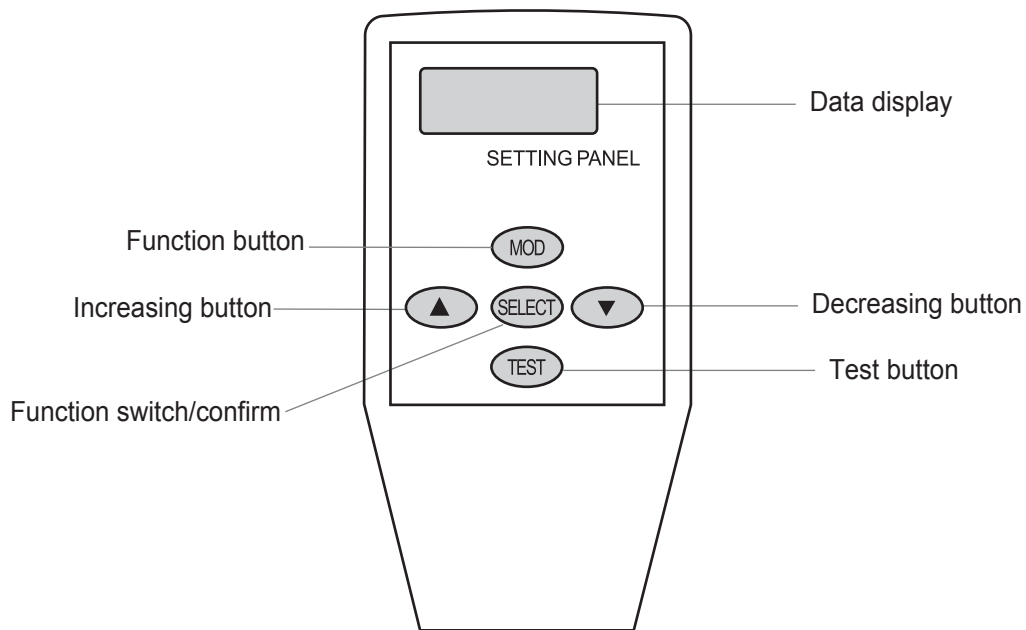


(Diagram B)
Installation of glass clamp

5. Electrical connection



6. Introduction of setting panel



1. Introduction of setting panel interface

1.Data display: This interface display the data that user is adjusting.

2.Function display

F--1 to set operation 5 datas

- o5: opening speed
- o_d: slowly opening angle
- c5: closing speed
- c_d: slowly closing angle
- ot : open time

F--2 to set door 8 datas

- n1: Single/Double door
- n2: Master/slave door
- n3: Master-slave/SYNC
- o: Manual open Y/N
- L: Lock Signal/Auto
- H: Door weight L/H
- Zero: zero position
- P: opening angle Min./Max

3.Increase progressively: Increase the data of every function

4.Decrease progressively: Decrease the data of every function

5.Function switch/confirm:

Function switch: Confirm the current data and switch to the next one.

Confirm: When every data is adjusted, save the present setting, and transfer it to the controller.

6.Test: After the confirmation, test the operation of the door.

6. Introduction of setting panel

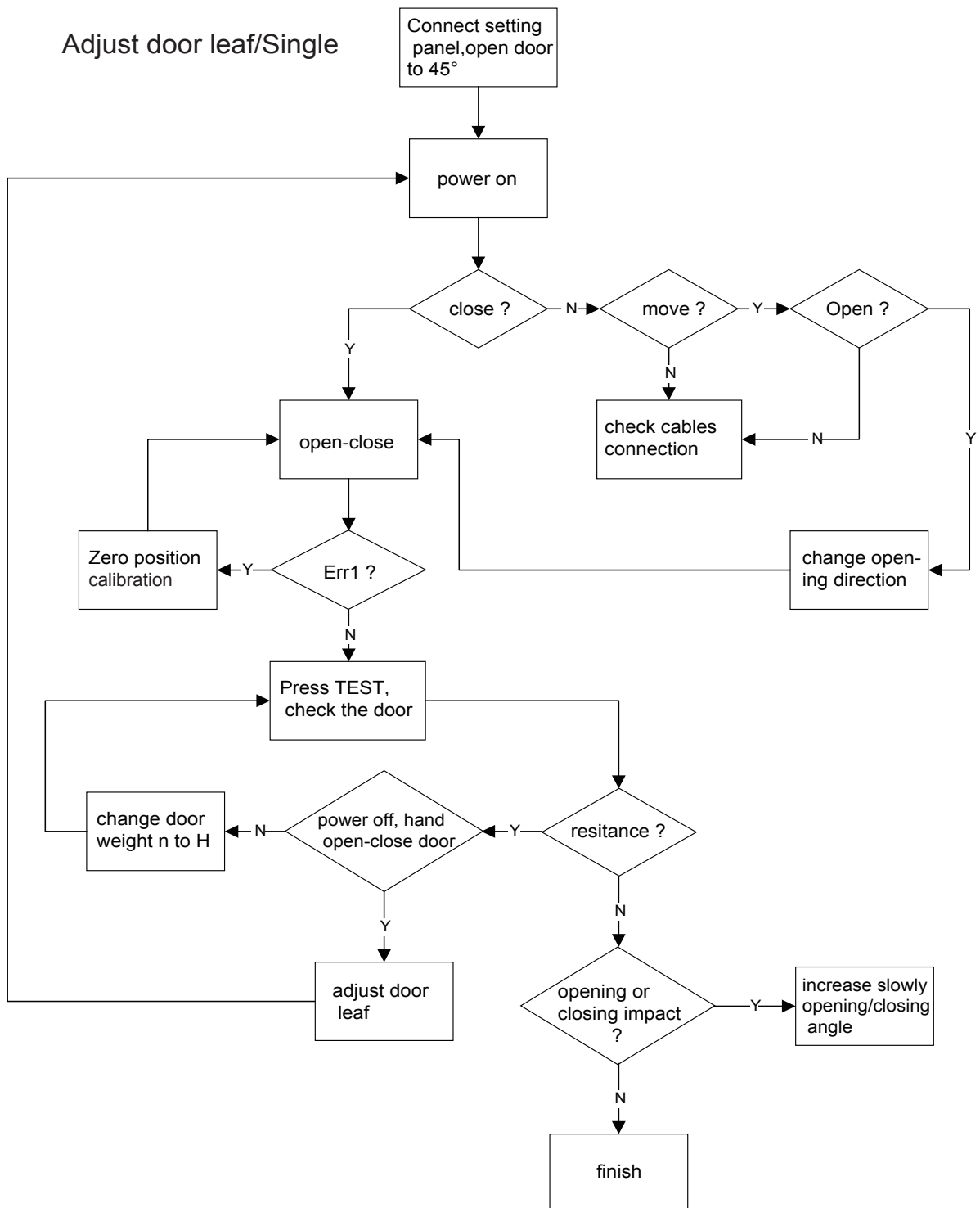
2. Initial installation

Zero position calibration:

Select the setting panel "ZEro", ensure the door is closed, press "▼" screen display "000", then press "▲", display "---0", the door will open-close one time, calibration is successfully.

Change opening direction:

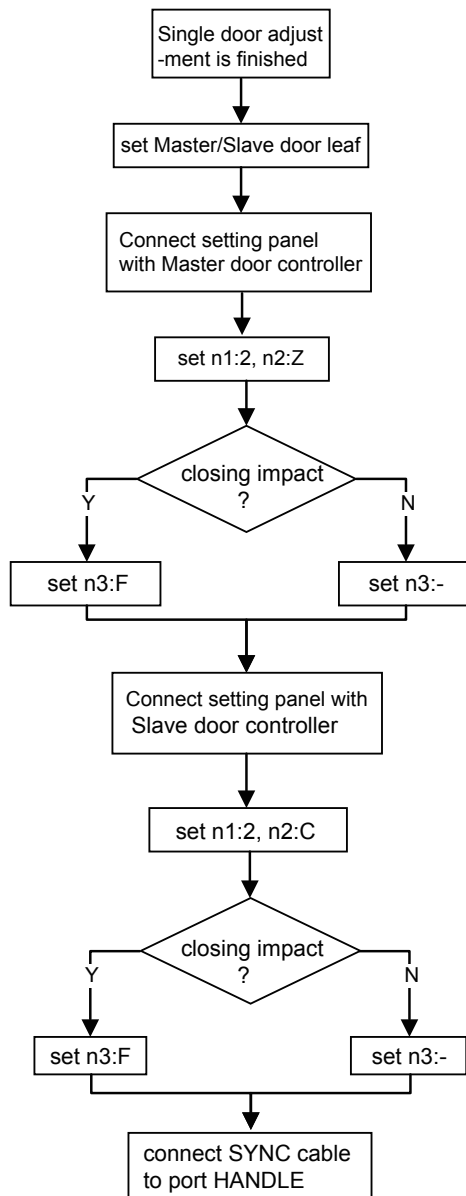
The first time power on or door is stopped without power then power on, press "▼", display "---P", the door opening direction will be changed, and the door will close-open-close.



6. Introduction of setting panel

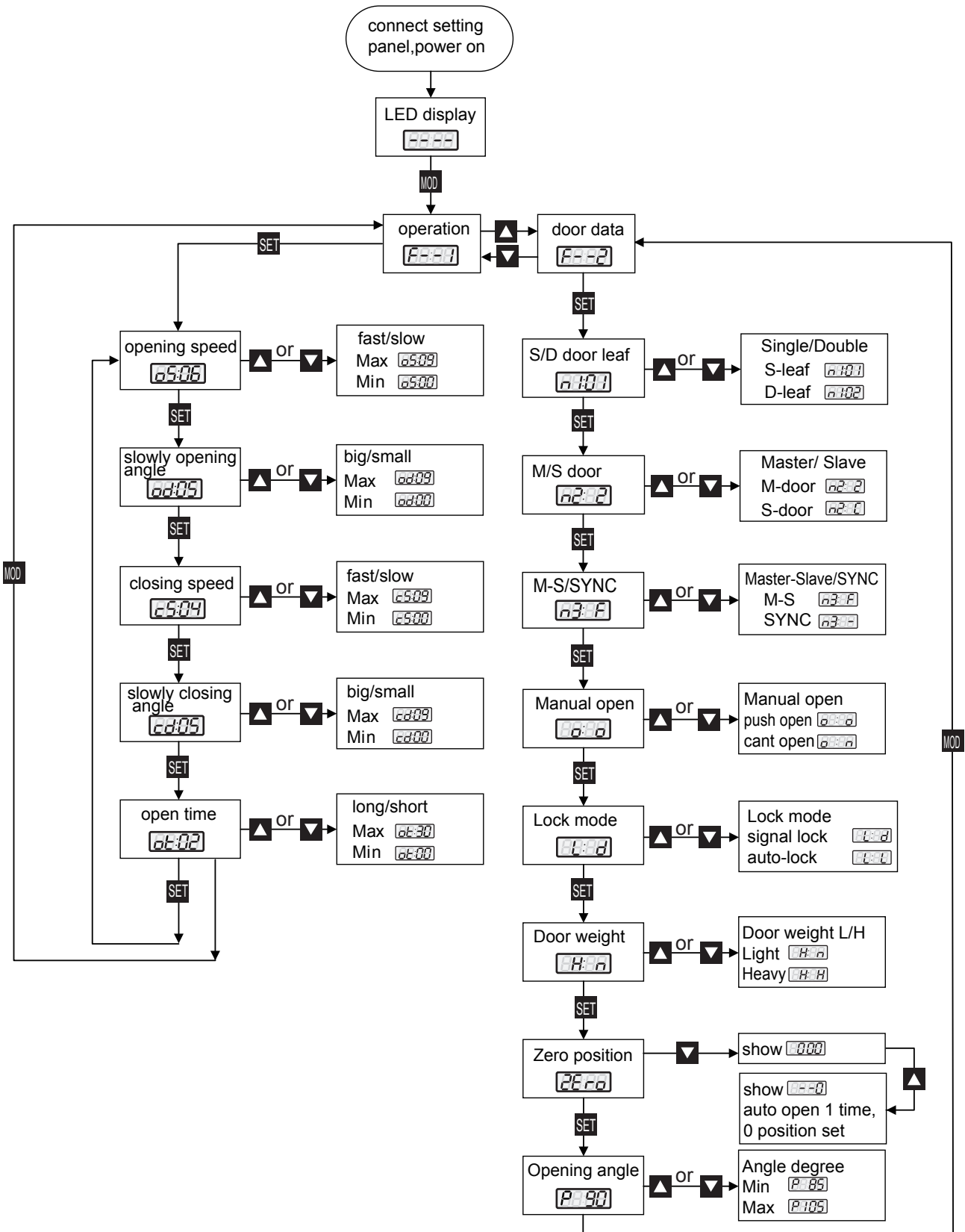
2. Initial installation

Adjust door leaf/Double



7. Parameter adjustment & function setting

Press "MOD" to enter into the menu, press "▲" "▼" to choose operation data (F--1) or door data (F--2), press "SELECT" to confirm data, press "▲" "▼" to increase or decrease.





The Product Has Passed ISO 9001:2015 Quality Management System Certification.